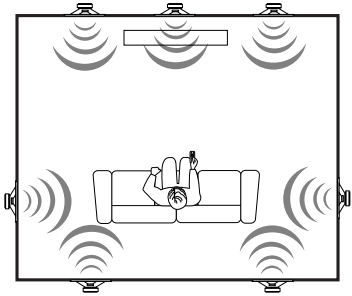
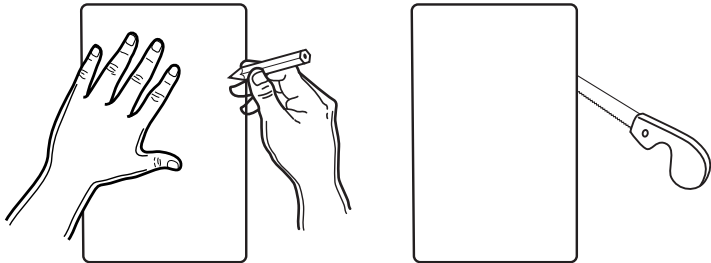


## SPEAKER PLACEMENT AND LOCATION

Optimum speaker placement depends on personal listening preference and, when used in home theater applications, follow standard listening recommendations for left, center, right and surround usage (see below).

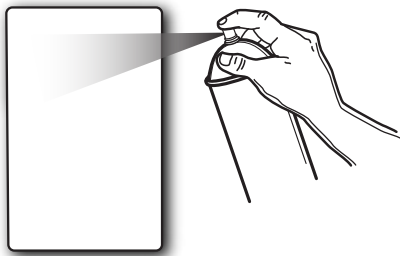


Make sure the speaker cutout is placed between two joists with plenty of clearance. Use a stud finder to locate joists, and mark locations. Be sure to avoid electrical wires and plumbing when cutting hole for installation. If you encounter electrical wiring or plumbing, you may have to consider another location.



## PAINTING THE SPEAKER GRILLE

This speaker grille may be painted. To apply spray paint to the grille, follow the manufacturer's instructions and remember to remove the scrim before finishing. To paint the outer bezel on press fit speaker chassis, use the cutout template as mask, and paint.

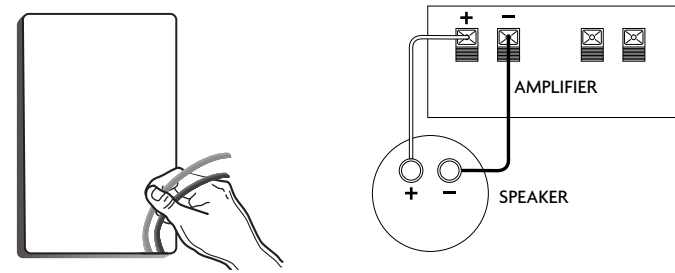


## INSTALLATION

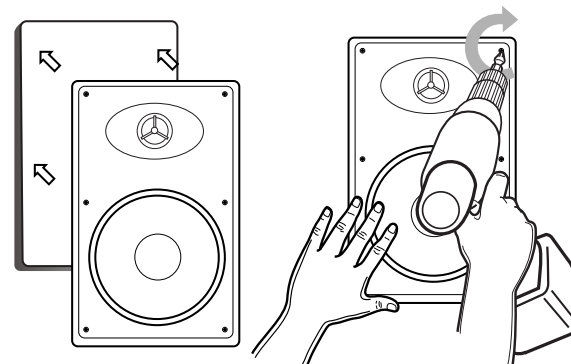
Make sure that grille is removed from the speaker. Loosen all 4 of the screws by turning them counter-clockwise until the clamps, or "dog ears" move freely. DO NOT remove the screws.

Connect the wires using the spring clips by pushing down on the clip and inserting the trimmed, exposed wire into the clip hole. Remove pressure on the clip, and the wire should be locked into place. Remember, red clip is + and black clip is - .

Note: For new construction, it is recommended that install Kit WK-8600 is used for M-8600-W, M-8650-W, and M-8652-C.



Place the speaker into the hole and press tightly against drywall with one hand, and tighten each of the screws until the speaker is firmly in place. Before placing grille on speaker, make sure there are no vibrations when playing. If so, check the installation screws to see if they need further tightening.



## MAINTENANCE

These speakers require little maintenance and, if cleaning is needed, you may use a dry cloth. If the speaker is subject to smoke or grease, a mild detergent and moistened cloth may be used. DO NOT use harsh chemicals or abrasives.

## LIMITED LIFETIME WARRANTY

This warranty is non-transferable, and only applies to the individual that made the original purchase.

For warranty/service issues, please contact your place of purchase.

Please hold on to your original receipt.

The warranty covers any production and material defects of purchased product.

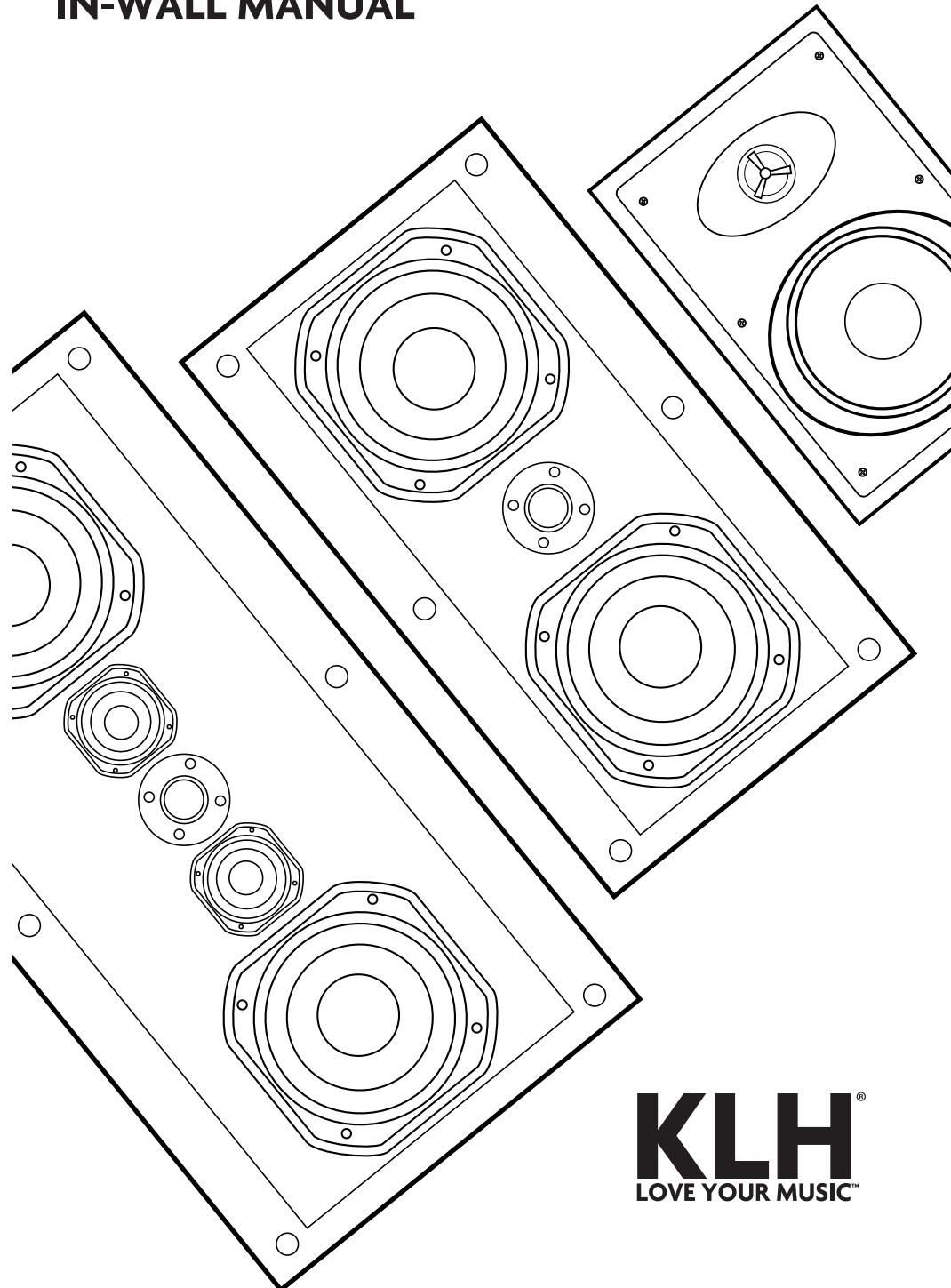
The following is NOT COVERED by the warranty:

1. Accidents, misuse, poor maintenance, electrical overloads such as lightning or voltage.
2. No DIY, must be installed by CEDIA-qualified installer. No abuse.
3. Incorrect installation of product.
4. Altered serial number.
5. Transportation costs for service call.

Replacement item cannot exceed the cost of the item under warranty. The supplier is responsible for only repair or replacement.

**KLH**<sup>®</sup>  
LOVE YOUR MUSIC™

## MAXWELL/FARADAY IN-WALL MANUAL



**KLH**<sup>®</sup>  
LOVE YOUR MUSIC™